

重型車用J1939資料橋接器

CAN J1939 Data Bridge for HD Vehicles

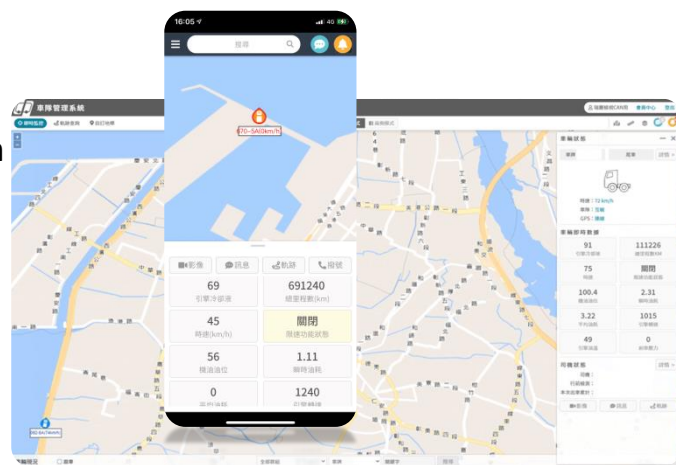
CCP (Contactless CAN Probe)

Features

- ✓ Provide Basic J1939 data
 - SPD, TMP, RPM, APP, Tire, Distance, ...etc. (Contactless CAN Probe)
 - Weight, (Average, Instantaneous) fuel economics
- ✓ Can Provide different command sets
 - Basic proprietary: for basic efficient data communication to OBU
 - Advanced: for ESG FMS applications
 - (E): (instantaneous, average) fuel economics, carbon emission, weight,...
 - (S): brake status, wheel angle, idle time,...
 - (G): driver behavior record and replay, cybersecurity
 - Customized: for customer system Integration
- ✓ Can Integrate with our CCP
 - May depend on connector
- ✓ Easy to integrate with IOT devices: BT, USB, 3G/4G, LoRa, NBIoT...
- ✓ Optional Contactless CAN Probe
- ✓ Compliance with the automotive EMS test level: BCI (ISO 11452-4), EFT (IEC 61000-4-4), ESD (IEC61000-4-2)
- ✓ Compatible brand/models: >200
 - ADL, DAF, DAEWOO, FUSO, HINO, IVECO, KING LONG, SCANIA, VOLVO, YUTONG, etc.

Applications | fleets, vehicles, and drivers

- ❖ ESG Based Fleet management
 - Driver Behavior Analysis
 - Accurate Carbon Emission Calculation
 - Vehicle health condition..
- ❖ ADAS (Advanced Driver Assistant System)
- ❖ Vehicle Diagnosis/Maintenance
- ❖ GPS Navigation Assistance
- ❖ Vehicle diagnosis & maintenance
- ❖ In-vehicle infotainment (IVI)
- ❖ Vehicle-to-vehicle (V2V) communications



Real application for ESG transportation